

PIED-À-TERRE

RESIDENCE 12
FLOORS 15-16

STUDIO | 1 BATH
539 SF

FEATURES

RAFFLES BOSTON'S RESPITE FOR URBAN ADVENTURERS

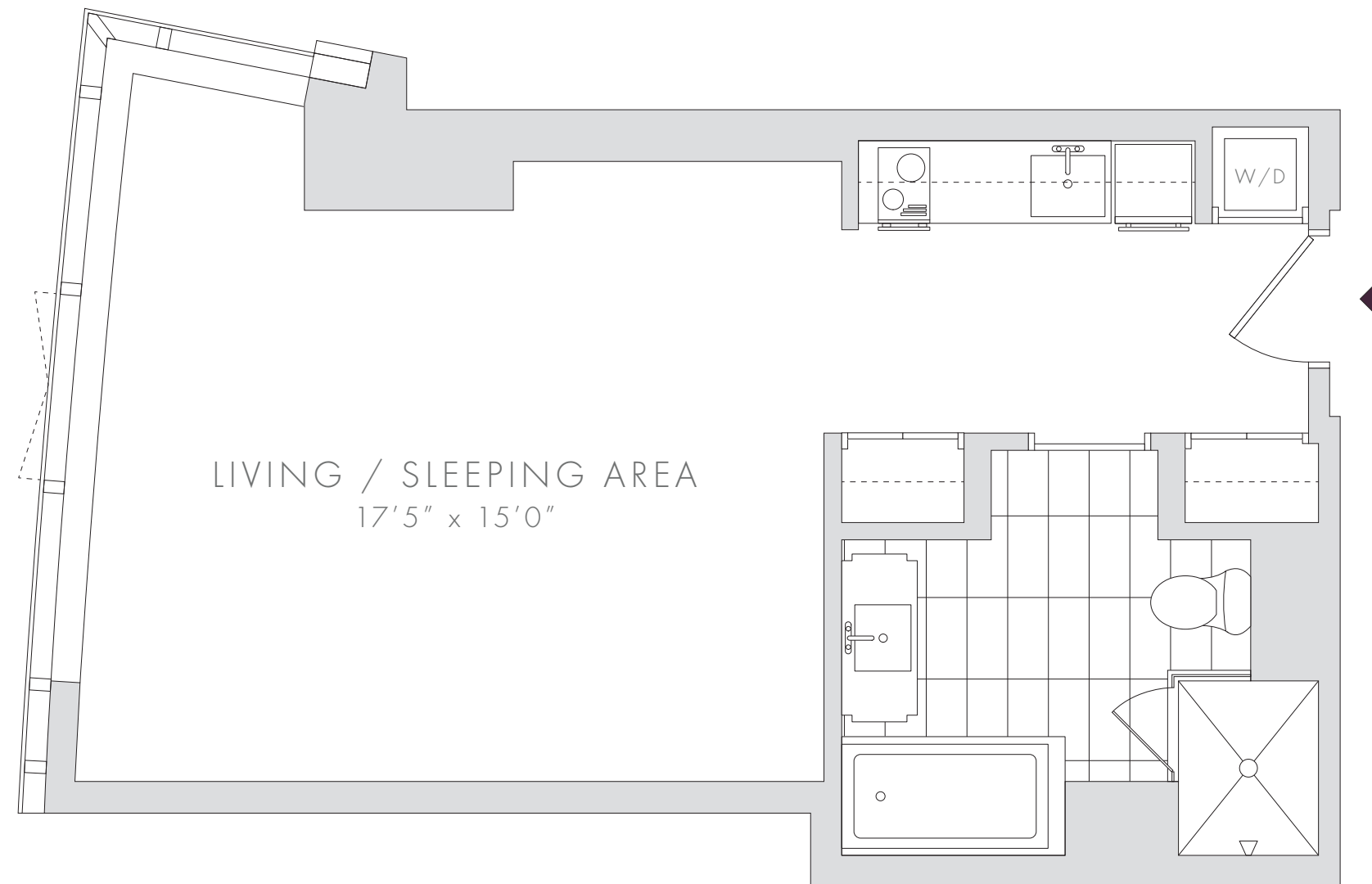
CORNER HOME WITH NORTHERN AND WESTERN EXPOSURES

EXPANSIVE FLOOR-TO-CEILING TRIPLE BAY GLASS WINDOWS

CUSTOM INTEGRATED KITCHENETTE WITH BUILT-IN APPLIANCES

SPACIOUS BATHROOM WITH SOAKING TUB AND GLASS-ENCLOSED SHOWER

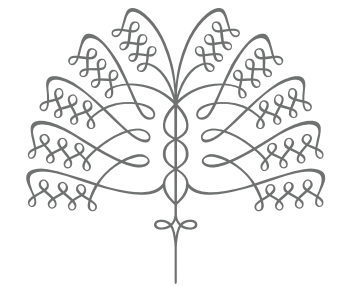
DUAL CLOSETS



NOTES: _____



PLANS, DIMENSIONS AND FEATURES SHOWN ARE APPROXIMATE AND ARE SUBJECT TO CHANGE WITHOUT NOTICE OR OBLIGATION. VARIATIONS MAY OCCUR DEPENDING, FOR EXAMPLE, ON CONSTRUCTION VARIANCES, LOCATION OF UNIT AND/OR MECHANICAL OR STRUCTURAL REQUIREMENTS.



RAFFLES
BOSTON BACK BAY
HOTEL & RESIDENCES

