

# PIED-À-TERRE

RESIDENCE 6  
FLOORS 15-16

STUDIO | 1 BATH  
426 SF

## FEATURES

*RAFFLES BOSTON'S RESPITE FOR  
URBAN ADVENTURERS*

SOUTH FACING HOME WITH SOUTH END VIEWS

EXPANSIVE FLOOR-TO-CEILING  
TRIPLE BAY GLASS WINDOWS

CUSTOM INTEGRATED KITCHENETTE WITH  
BUILT-IN APPLIANCES AND PANTRY CABINET

DUAL CLOSETS

NOTES: \_\_\_\_\_

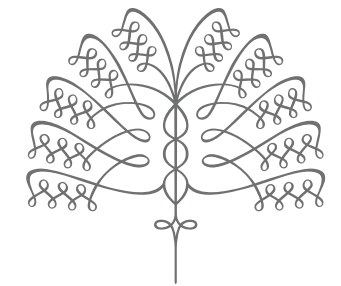
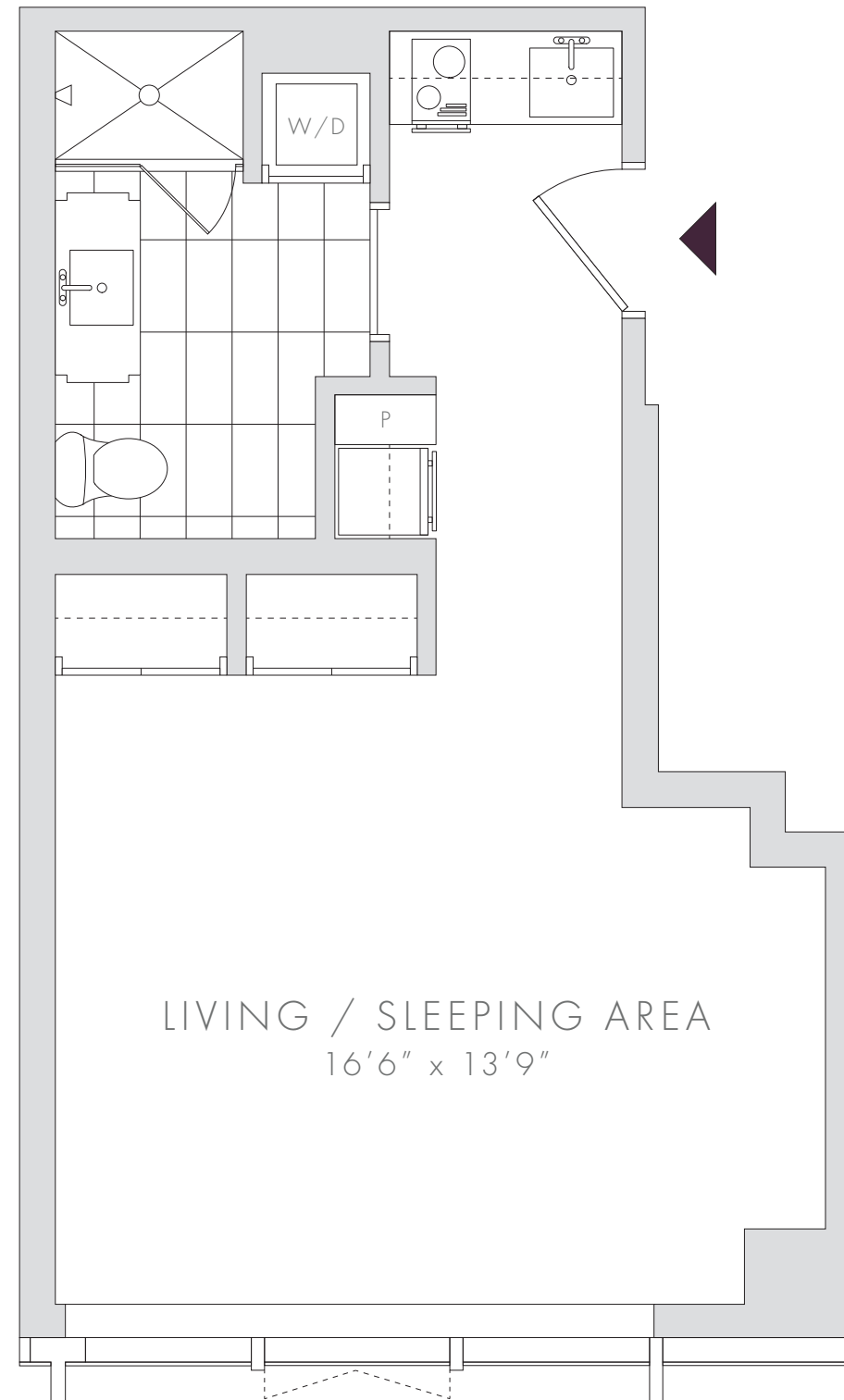
\_\_\_\_\_

\_\_\_\_\_

\_\_\_\_\_



PLANS, DIMENSIONS AND FEATURES SHOWN ARE APPROXIMATE AND ARE SUBJECT TO CHANGE WITHOUT NOTICE OR OBLIGATION. VARIATIONS MAY OCCUR DEPENDING, FOR EXAMPLE, ON CONSTRUCTION VARIANCES, LOCATION OF UNIT AND/OR MECHANICAL OR STRUCTURAL REQUIREMENTS.



**RAFFLES**  
BOSTON BACK BAY  
HOTEL & RESIDENCES

