

# PIED-À-TERRE

RESIDENCE 5  
FLOORS 15-16

STUDIO | 1 BATH  
603 SF

## FEATURES

*RAFFLES BOSTON'S RESPITE FOR  
URBAN ADVENTURERS*

SEPARATE LIVING AND SLEEPING AREAS

CORNER HOME WITH SOUTHERN  
AND EASTERN EXPOSURES

EXPANSIVE FLOOR-TO-CEILING  
TRIPLE BAY GLASS WINDOWS

CUSTOM INTEGRATED KITCHENETTE  
WITH BUILT-IN APPLIANCES

WINDOWED BATHROOM WITH SOAKING  
TUB AND GLASS-ENCLOSED SHOWER

DUAL CLOSETS

NOTES: \_\_\_\_\_

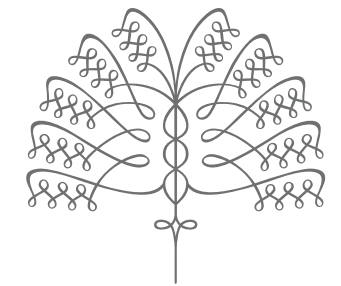
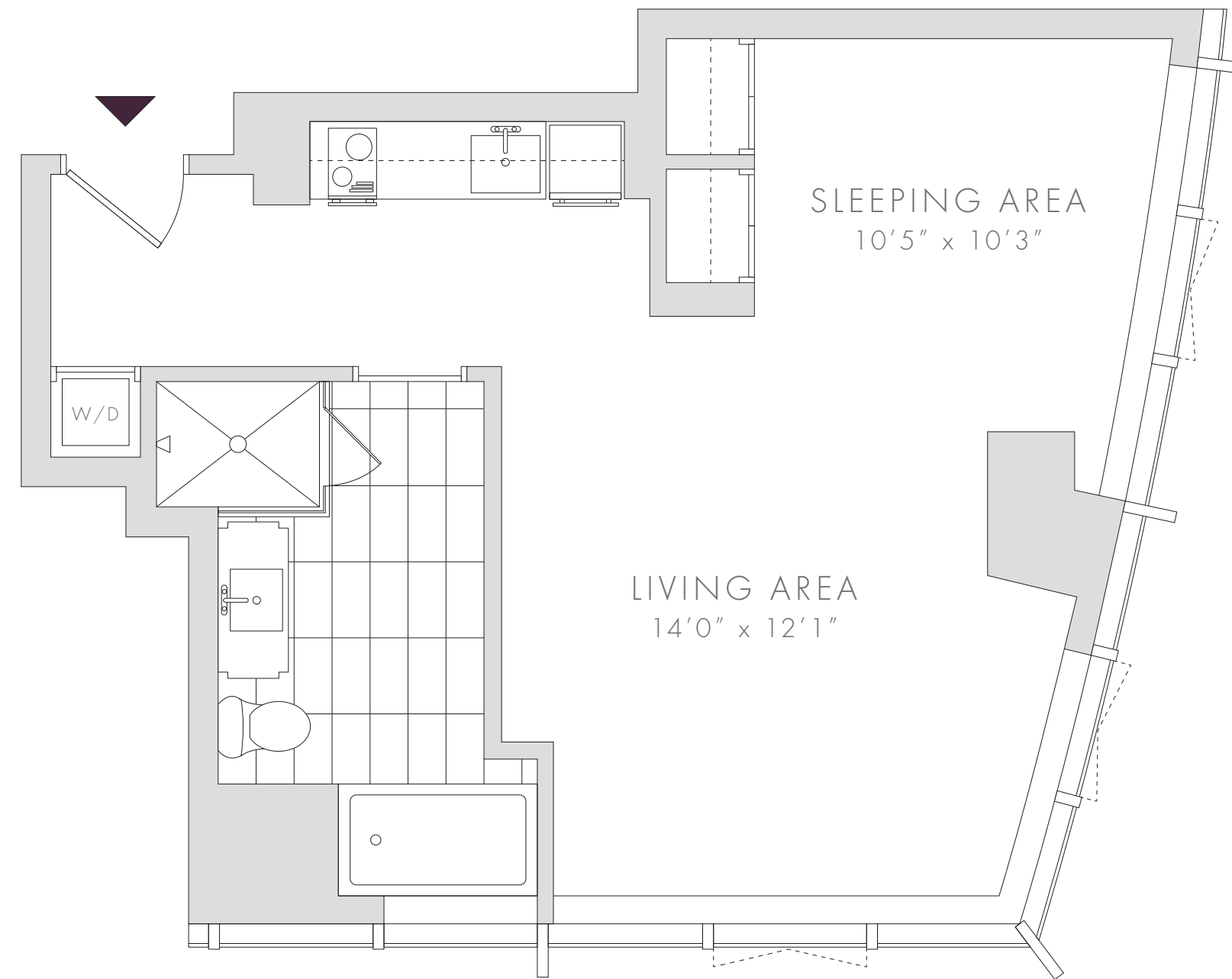
\_\_\_\_\_

\_\_\_\_\_

\_\_\_\_\_



PLANS, DIMENSIONS AND FEATURES SHOWN ARE APPROXIMATE AND ARE SUBJECT TO CHANGE WITHOUT NOTICE OR OBLIGATION. VARIATIONS MAY OCCUR DEPENDING, FOR EXAMPLE, ON CONSTRUCTION VARIANCES, LOCATION OF UNIT AND/OR MECHANICAL OR STRUCTURAL REQUIREMENTS.



**RAFFLES**  
BOSTON BACK BAY  
HOTEL & RESIDENCES

